

# smartPlug™

## MANUAL

### ENGLISH

DOC00071 Rev.02



# INTRODUCTION

The smartPlug™ is a state-of-the-art hearing protection and communication system that allows you to retain situational awareness while being in full contact with all your communication devices.

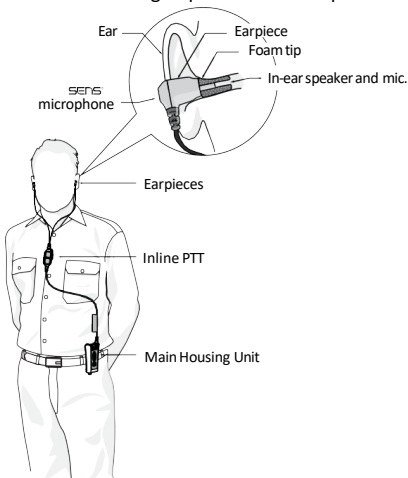
Situational awareness is provided by **SENS** processing technology and environmental microphones mounted within the headset.

Contact through other communication devices is enabled by:

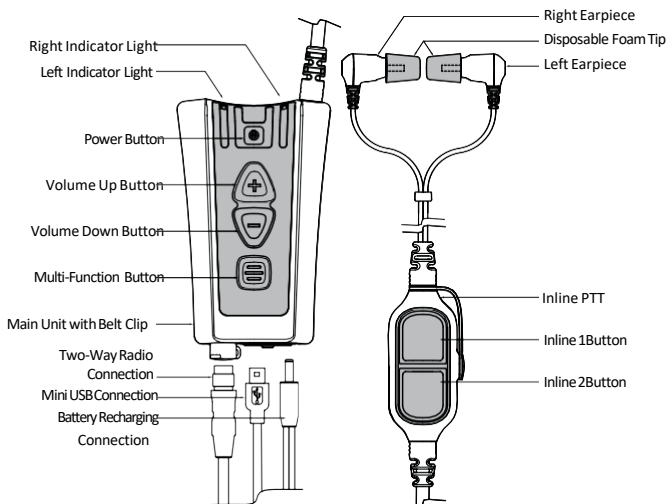
- Two-Way Radio interface cables (sold separately).
- Bluetooth® to Two-Way radios and cell phones
- Direct headset-to-headset communications through Short-Range

The smartPlug™ is designed to be worn with the main housing attaching to the belt or pant seam, and the inline PTT attaching to the shirt / upper garment of the user.

**NOTE:** For SR communications, the best communication range is achieved with the Inline PTT set as high up on the user as possible.

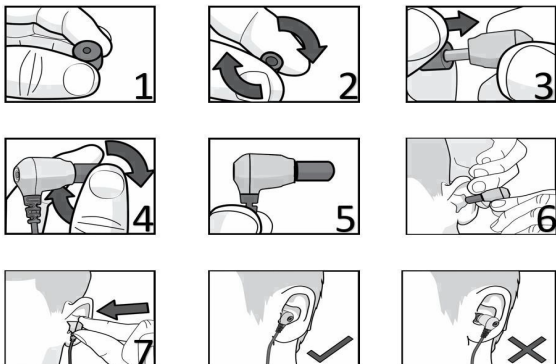


# SMARTPLUG™ ANATOMY



## FITTING THE EARBUDS

It is critical the earpieces are correctly fitted to ensure the correct level of hearing protection and communication abilities. The earpieces incorporate an in-ear pickup, if the earpieces are not fitted correctly, the speech quality may be lower than expected.



1. Place disposable foam tip between thumb and forefinger.
2. Roll foam tip to a compressed, crease-free cylinder.
3. Push the foam tip all the way onto the earpiece spout.
4. Roll the foam tip again between the thumb and forefinger.
5. Ensure the foam tip remains a compressed crease-free cylinder.
6. Using your opposite hand, pull your ear upward and outward.
7. Insert the earpiece and hold in place for 30 seconds while the foam tip expands. Proper fit is ensured by not having any of the foam tip visible while the earpiece is in the ear.

## OPERATING THE HEADSET

Your smartPlug™ must be powered up to use **SENS**™ situational awareness and the communication connectivity features.

### POWER ON/OFF

To power up your smartPlug™, press and release the power button.

To power off your smartPlug™, press and hold the power button until the unit powers off.

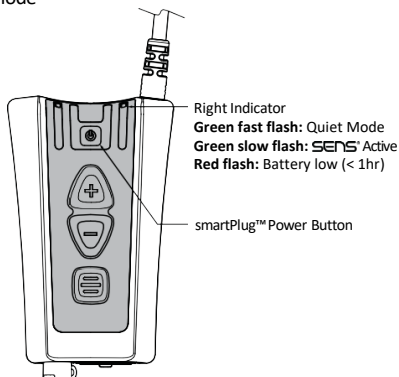
## ENVIRONMENTAL MODES

Your smartPlug™ features **SENS**™ situational awareness technology (**S**peech **E**nhancement, **N**oise **S**uppression).

**SENS**™ allows you to be in audible contact with your surroundings while wearing your smartPlug™.

To toggle **SENS**™ situational awareness on or off, momentarily press and release the power button.

The volume control buttons can be used to raise or lower the audio level of the **SENS**™ mode

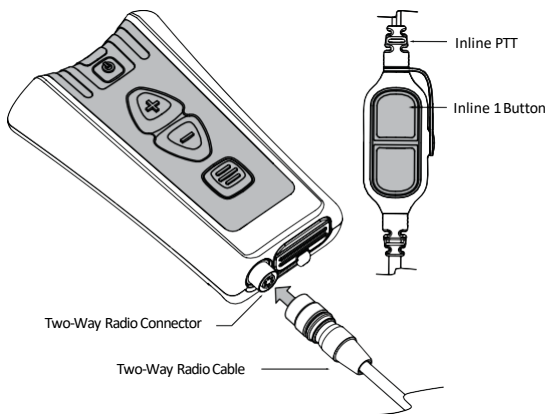


## CONNECTING TWO-WAY RADIO

smartPlug™ can be connected to most two-way radios through interface cables (sold separately).

1. Connect the two-way radio cable into the two-way radio connector located on the bottom of the main unit.
2. Turn the two-way radio on. A tone will be heard through the smartPlug™ indicating it has detected the two-way radio.
3. Adjust the volume of the two-way radio communication by the normal controls of your two-way radio until a comfortable level is reached.
4. To transmit, press and hold the inline 1 button or the button programmed by your dealer.

**NOTE:** See 'Using Bluetooth®' for more information on connecting two-way radios by Bluetooth®



## USING BLUETOOTH®

The smartPlug™ also features Bluetooth® connectivity. Bluetooth® enables wireless connections to some models of two-way radio, industrial computers, vibration analyzers, and most cell phones. If Bluetooth® is installed on your smartPlug™, the following details apply.

**Default Automatic Connection Setting:** When the smartPlug™ power up, the smartPlug™ searches for previously paired devices. If a previously paired device is within range, it will automatically attempt to reconnect to this device. A blue light will flash slowly if a Bluetooth® connection is made and you will hear a tone in the smartPlug™.

**NOTE:** When entering pairing mode, the smartPlug™ forgets all previously connected devices. Bluetooth® is discoverable for 2 minutes in pairing mode. If no connection has been made within this time, the process will need to be repeated.

**Bluetooth® Phone:** To answer calls, press the Multi-Function Button (or programmed button, consult your dealer). To end or reject a call, press, and hold the Multi-Function Button for 2 seconds.

**Bluetooth® PTT:** Some radios and cell phones feature PTT over Bluetooth®. Please consult your dealer for more information.

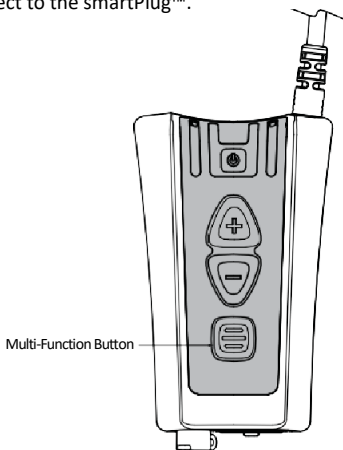


## BLUETOOTH® PAIRING ANDCONNECTING

### Bluetooth® Pairing to New Device:

For Bluetooth® functionality, the smartPlug™ must be paired and connected.

1. Enable Bluetooth® on the device which you want to connect to the smartPlug™
2. Powerup the smartPlug™
3. Hold the Multi-Function Button for 5 seconds to enable pairing. A blue light indicator will switch on.
4. Follow pairing instructions on the device that you want to connect to, search and pair the smartPlug™. If asked for a passkey, enter 0000
5. Once paired, the smartPlug™ will automatically connect, and the blue light indicator will flash slowly.
6. If automatic connection fails, use the device instructions to connect to the smartPlug™.



## USING SHORT-RANGE

Short-Range (SR) is a technology enabling communication directly between compatible smartPlugs™. Short-Range units tuned to the same channel and within range will hear your transmissions. SR behaves similarly to Two-Way Radios, where only one unit can transmit at one time.

If Short-Range is installed on your smartPlug™, the following applies:

By default, Short-Range is disabled and must be enabled. To enable Short-Range press Volume Up and Volume Down buttons simultaneously, the smartPlug™ will make a tone indicating SR has been enabled.

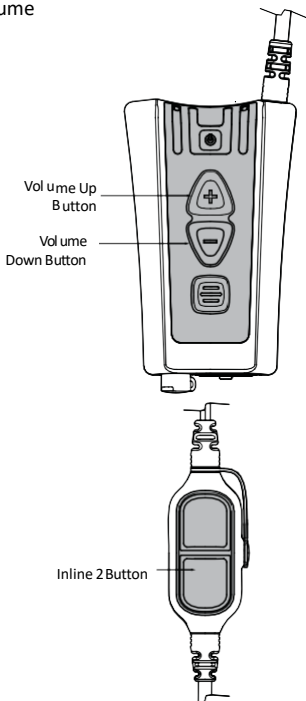
### Headset-to-Headset Communication with SR:

To communicate with other smartPlugs™, push and hold the Inline 2 Button and talk. Other smartPlugs™ within range and tuned to the same frequency will hear your transmissions.

### SR Change Frequency Channel:

To change SR channel up press and hold Volume Up. To change SR channel down press and hold Volume Down. The smartPlug™ will speak the channel number. Up to 8 channels can be programmed.

The SR frequency can only be set by your dealer. Please contact your dealer for reprogramming of channels.



## USING FM RADIO

The smartPlug™ can also be configured to receive FM radio stations. This enables you to listen to FM radio while wearing the smartPlug™. If FM Radio is installed on your smartPlug™, the following applies:

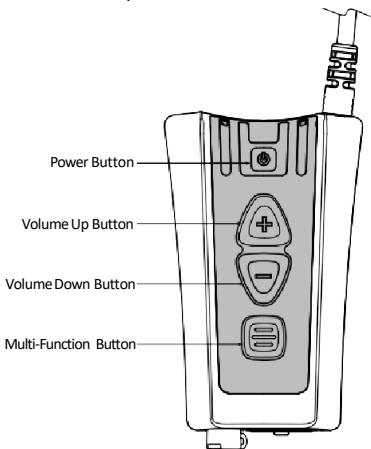
By default, FM Radio Reception is disabled and must be enabled as follows:

**FM Radio On / Off:** Press the Power Button + Multi-Function Button together simultaneously. The smartPlug™ will make a tone indicating that FM radio has been enabled and you will hear the currently tuned radio station in the smartPlug™.

To change radio stations, scan for a new station:

**FM Radio Scan:** Press and hold the Volume Up button for 2 seconds to scan up or press and hold the Volume Down button for 2 seconds to scan down. The smartPlug™ will tune to the next stations.

**NOTE:** SR and FM radio cannot be enabled simultaneously. Enabling FM radio will automatically disable SR Radio and vice versa.



## CHARGING

Your smartPlug™ comes supplied with a charger. Do not attempt to use third party chargers as damage may result. Your smartPlug™ should be regularly charged. To charge your smartPlug™, connect the charger to the smartPlug™ and connect to the main power.

**While charging the Right Indicator LED will be Red. When charging is complete the LED will turn Green.**

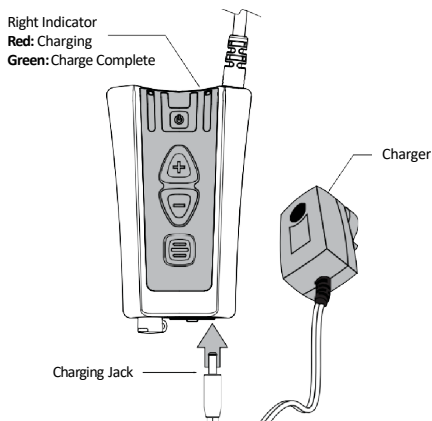
**NOTE:** Be sure to charge your smartPlug™ fully before first use.

**NOTE:** Your smartPlug™ will automatically power up when the charger is connected to the smartPlug™.

**Charge Time:** 5 hours

**Battery Life:** 24 hours

Your smartPlug™ is powered by a built-in high-capacity Lithium-Ion battery. This is designed to last the life of your smartPlug™ and should be returned to the manufacturer for replacement and servicing. Any attempt to access the battery will damage the smartPlug™. Please see accompanying smartPlug™ Information guide for additional battery safety precautions.



## TROUBLESHOOTING

**Having Trouble Pairing the smartPlug™:** Make sure any previously paired devices are powered off. Make sure the radio is configured with Bluetooth® enabled.

**smartPlug™ and Radio will not Connect Wired:** Make sure the cable is securely fastened to both the Two-Way Radio and the Main Housing.

**Bluetooth®:** Make sure your radio and smartPlug™ are paired together and within range. Try pairing the two devices together again. Make sure the Two-Way Radio is not connected to another device or smartPlug™/headset.

**Having Trouble Hearing:** Check if your smartPlug™ is on. Make sure your radio and smartPlug™ are paired, connected and within range. Check the radio's LED indicator to check transmit/receive is not stuck on. Check your radio is functioning by turning off the smartPlug™ and listening through the radio. If the radio is working, try turning up the volume control on the smartPlug™ and on the radio controls.

**Having Trouble Being Heard:** Check if your smartPlug™ is on. Make sure the radio and smartPlug™ are paired, connected and within range. Check your radio is functioning by turning off the smartPlug™ and talking through the radio. Make sure you have fitted the earpieces correctly.

**Two-Way Radio Distorted:** Check your Two-Way Radio volume level. If the volume is set too high, this may be breaching the volume level on the smartPlug™ and affecting the sound quality.

Light Indicator	smartPlug™ Function
Red on	Charging
Green on	Charge complete
Red slow flash	Battery low <1hr remains
Green fast flash	Quiet mode
Green slow flash	SENS® situational awareness active
Blue on	Bluetooth® on and discoverable
Blue slow flash	Bluetooth® connected
Blue fast flash	Bluetooth® incoming call

## USER MAINTENANCE AND STORAGE

This product may be adversely affected by certain chemical substances. Further information should be sought from the manufacturer.

The headset should be stored at room temperature (between 15°C/59°F and 25°C/77°F). If storing for long periods (greater than 1 month) discharge the unit for at least 2 hours before storing for maximum battery life.

Please note that the battery is not user replaceable. If it becomes damaged or faulty, return to a Sensear authorized distributor for repair.

## ACCESSORIES AND SPARE PARTS

The following accessories and spare parts may be ordered separately:

SRCK0xxx	Various models, two-way radio interface cables for most popular two-way radios
SMPW0001	Universal Wall Charger
FETSM010	Foam ear tip – small (10.5mm) – 10 pair
FETMD010	Foam ear tip – medium (12mm) – 10 pair
FETLG010	Foam ear tip – large (14mm) – 10 pair

Further information may be obtained from your Sensear representative, via the Sensear website, or by emailing or writing to the address on this User Manual.

# SENSEAR STANDARD WARRANTY TERMS & CONDITIONS

Sensear Pty Ltd

("SENSEAR") warrants the SENSEAR manufactured HEARING PROTECTION products ("Product") listed below to be free from defects in material and workmanship under normal use and service for a period of 12 months from the original date of purchase.

SENSEAR will at its absolute discretion repair or replace the Product where a defect in material or workmanship occurs, at no charge to the end user for parts or labor. SENSEAR reserves the right to replace the Product with the same or equivalent part or Product rather than repair it. Where a part or Product is replaced, the part or Product becomes the property of SENSEAR. SENSEAR reserves the right to use refurbished parts or Product for repair or replacement. SENSEAR is not responsible for any damage caused to or by accessory or ancillary equipment connected or attached to the Product that is not provided by SENSEAR and is not expressly designed to operate in conjunction with the Product.

This warranty is not assignable or transferable to any other party, this warranty is extended to the original purchaser of the Product only.

This warranty is in addition to your statutory rights provided under the Trade Practices Act, or relevant legislation in your state or territory.

SENSEAR reserves the right to limit its liability to the repair, replacement, or refund of the purchase price of a Product. Under no event shall SENSEAR be liable for damages more than the original purchase price of the Product, for any loss of use, loss of time, inconvenience, loss of profits or savings, loss of revenue, commercial loss, or any other incidental, special or consequential loss to the full extent such may be disclaimed by the law.

This warranty does not cover:

- Defect or damage resulting from use of the Production other than its normal or intended manner.
- Defects or damage occurring from misuse, abuse, accident, corrosion, fire, liquid intrusion, or neglect, including during transportation.
- Defects or damage occurred from improper or unauthorized testing, operation, maintenance, service, repair, alteration, modification, or adjustment.
- Freight costs to the place of repair.
- Product that has been subjected to unauthorized or illegal alteration of the firmware or software in the Product.
- Cosmetic damage to the Product that does not interfere with the intended operation of the Product.
- Normal wear and tear.
- Product where the serial number has been removed or altered.
- Any batteries rechargeable or otherwise either shipped with or internal to the Product.
- Any consumable items, for example replaceable ear-tips or ear-cup pads.
- Warranty claims made outside of the warranty period.
- Warranty claims made without appropriate proof of purchase bearing both the original purchase price and date.
- All other warranties, conditions, terms, representations, and undertakings whether express or implied.

## How to Get Warranty Service

To register your product visit: [sensear.com/support/headset-registration](https://sensear.com/support/headset-registration)

If you require warranty service visit: [sensear.com/support/returns-repairs-new](https://sensear.com/support/returns-repairs-new)





# smartPlug™

## TECHNICAL INFORMATION

**Rev: 6/30/22**

**For most recent technical information, visit  
[sensear.com/support/technical-information](https://sensear.com/support/technical-information)**

## FORWARD

**Product Safety and RF Exposure Compliance:** This product is designed to be used in isolation or in conjunction with a two-way radio. Before using this product with a two-way radio, read the operating instructions for safe usage contained in the Product Safety and RF Exposure booklet enclosed with the two-way radio.

**Battery and Charging Information:** The internal battery is shipped with a nominal charge between 30 and 50% and should be stored between -10°C (14°F) and 30°C (86°F) to minimize permanent capacity loss.

Do not charge your headset in temperatures below 0°C (32°F) or above 40°C (104°F). Conditions inside a parked car can exceed this range. Do not store your headset in a parked car. Do not store your headset in direct sunlight. Storing your fully charged headset in high-temperature conditions may permanently reduce the life of the internal battery. Battery life may temporarily shorten in low- temperature conditions.

**WARNING** Never dispose of batteries in a fire because they may explode.

**NOTE:** The battery is not a user replaceable part.

## FCC COMPLIANCE STATEMENT

The smartPlug™ headset with Bluetooth® module, complies with Part 15 of the FCC Rules. Operation is subject to the following two conditions:

- (i) This device may not cause harmful interference
- (ii) This device must accept any interference received, including interference that may cause undesired operation.

**WARNING** Any changes or modifications not expressly approved by Sensear Pty Ltd. could void the user's authority to operate this equipment.

This equipment has been tested and found to comply with the limits for a Class B digital device, pursuant to Part 15 of the FCC Rules. These limits are designed to provide reasonable protection against harmful interference in a residential installation. This equipment generates, uses, and can radiate radio frequency energy and, if not installed and used in accordance with the instructions, may cause harmful interference to radio communications. However, there is no guarantee that interference will not occur in a particular installation. If this equipment does not cause harmful interference to radio or television reception, which can be determined by turning the equipment off and on, the user is encouraged to try to correct the interference by one or more of the following measures:

- Reorient or relocate the receiving antenna
- Increase the separation between the equipment and receiver
- Connect the equipment into an outlet on a circuit different from that to which the receiver is connected

Consult the dealer or an experienced radio/tv technician for help.

# DECLARATION OF CONFORMITY

Manufacturer's Name: Sensear Pty Ltd.  
 Manufacturer's Address: 199 Great Eastern Highway, Belmont, Western Australia, 6104 Australia

This declaration of conformity is issued under the sole responsibility of the manufacturer and herewith declares that the products **SPR, SP1R, smartPlug** series Ear Plug Headsets.

Conforms to the following directives:

2011/65/EU (L174/88-110)	RoHS Directive
(EU)2016/425 (L81/51-98)	PPE Directive
2014/53/EU (L153/62-106)	Radio Equipment Directive

As attested by conformity with harmonized standards

**RoHS:**

RoHS 2 Directive 2011/65/EU

**EMC and EMF Specifications:**

Electromagnetic Compatibility	EN301 489-1: V2.1.1 (2017-02)
Electromagnetic Compatibility	EN301 489-9: V2.1.1 (2017-03)
Electromagnetic Compatibility	EN301 489-17: V3.1.1 (2017-02)
Electromagnetic Compatibility	EN301 357: V2.1.1 (2017-06)
Electromagnetic Compatibility	EN300 328: V2.2.2 (2019-07)
Electromagnetic Fields	EN62479:2010

**Safety Specifications:**

IT Equipment EN62368-1: 2014 +AC:2015

**PPE Specifications:**

**PPE Conformance:** Finnish Institute of Occupational Health, Topeliuksenkatu, 41b, FI-00250 Helsinki, Finland, Notified Body: 0403 performed the EU Type Examination (Module B) and issued the EU type-examination certificate numbers 29223RGS02 and 10409GDS01.

This product is Category III and is subject to Module D conformity to type based on quality assurance of the production process and is under the surveillance of BSI Group ANZ Pty Ltd (Notified Body 2797). Certification Number: CE 717133

**Ear-Plug protection:**

EN 352-2:2002 Hearing protectors. General requirements Part 2: earplugs

EN 352-7:2002 Hearing protectors. General requirements Part 7: Level-dependent earplugs

Sensear PTY Ltd: Great Eastern Highway, Belmont, Perth, Western Australia Date: 30 June 2022



**Premchand K Surya Narayanan**

Managing Director

Tel: +61 8 9277 7332, Toll Free: 1-300-859-120, Web: <https://www.sensear.com>

For most recent Declaration of Conformity, please visit  
[sensear.com/support/declaration-of-conformity](https://sensear.com/support/declaration-of-conformity)

## SPECIFICATIONS

SPECIFICATION	smartPlug™	
Weight	172g	6.1oz
Operational Temp. (charging)	0°C to +45°C	32°F to +113°F
Operational Temp. (discharging)	-20°C to +60°C	-4°F to +140°F
Battery Life	15 Hours	
Battery Charge Time	5 Hours	
Housing Material	PC/ABS+TPE	
RoHS Compliant	Yes	
Bluetooth® Version	3.0	
Bluetooth® Profiles Supported	HSP, HFP v1.6, A2DP	
FM Radio Reception	88.0–108.0 MHz	
SR Transmitter Range	20m/65ft line-of-site depending on region setting	
NRR (ANSI S3.19-1974)	31dB	
SNR (EN352-2)	38dB	
SLC80 (AS/NZS 1270:2002)	28dB, Class 5	
Charge Voltage	5V	

This product must not be dismantled by the user for any purpose. The unit cannot be required by the user.

## NRR AND SLC80

The smartPlug™ has been certified to international hearing protection standards including EN352-2, EN352-7, ANSI S3.19- 1974, ANSI 12.6-2008, and AS/NZS 1270-2002. The following passive attenuation ratings were observed:

### PASSIVE ATTENUATION (ANSI S3.19 – 1974)

smartPlug™ measured in accordance with ANSI S3.19-1974.

#### Foam tips (SML, MED, LRG)

<i>Frequency (Hz)</i>	<b>12</b>	<b>250</b>	<b>50</b>	<b>1000</b>	<b>2000</b>	<b>3150</b>	<b>4000</b>	<b>6300</b>	<b>8000</b>	<b>NRR</b>
Mean attenuation(dB)	38.	35.	40.	39.6	40.7	42.9	40.9	44.5	45.8	31dB
Standard deviation(dB)	4.	2.8	3.	4.2	3.8	3.5	2.9	4.4	3.9	

## PASSIVE ATTENUATION (ANSI S12.6 – 2008)

smartPlug™ measured in accordance with ANSI S12.6–2008 (Method B)

### Foam tips (SML, MED, LRG)

Frequency (Hz)	125	250	500	100	2000	4000	8000	NRS
Mean attenuation(dB)	32.0	29.2	32.3	32.0	37.0	40.8	42.6	29 to 39dB
Standard deviation (dB)	6.1	6.5	6.8	6.7	5.1	5.8	4.5	
APV84%	26.9	23.7	26.6	26.0	32.7	35.9	38.8	

## PASSIVE ATTENUATION (AS/NZS 1270:2002)

smartPlug™ measured in accordance with AS/NZS1270:2002.

### Foam tips (SML, MED, LRG)

Frequency (Hz)	125	250	500	1000	2000	4000	8000	SLC(80)
Mean attenuation(dB)	31.7	28.1	32.1	32.7	36.7	39.5	42.0	28dB, Class5
Standard deviation (dB)	9.7	7.8	8.0	8.2	5.7	7.6	5.7	
Mean attenuation-Standard deviation (dB)	22.0	20.3	24.1	24.5	31.0	31.9	36.3	

## PASSIVE ATTENUATION (EN352-2 AND EN352-7)

smartPlug™ measured in accordance with EN352-2 and EN352-7.

### Foam tips (EN352-2)

Frequency (Hz)	125	250	500	1000	2000	4000	8000	H	M	L	SNR
								(dB)			
Mean attenuation (dB)	38.8	35.4	40.7	39.8	40.9	40.8	44.3	37	36	35	38
Standard deviation (dB)	4.8	3.2	3.5	4.7	3.5	3.7	3.7				
Mean attenuation – Standard deviation (dB)	34.1	32.2	37.2	35.1	37.5	37.1	40.7				

The smartPlug™ has level dependent facilities and the criterion levels as defined in EN352-7 are displayed below.

Model	H	M	L
	(dBA)		
Foam tips	115.4	118.0	118.1



## **COPYRIGHT NOTICE**

This document remains the property of Sensear Pty. Ltd. All rights reserved. No part of this document may be reproduced in any form, either in an electronic retrieval system or otherwise, without the prior written consent of Sensear Pty. Ltd.

## **IMPORTANT NOTICE**

Sensear Pty. Ltd. reserves the right to make corrections, modifications, enhancement, improvements and other changes to its products and services and to discontinue any product or service without notice.

While Sensear Pty. Ltd. makes every effort to ensure that the information in this document is correct at the time of publication, users and potential users should first check with Sensear Pty. Ltd. to ensure that they have received the most up-to-date documentation.



## Waste (Disposal) of your Electronic and Electric Equipment



### European Union (EU) Waste of Electrical and Electronic Equipment (WEEE) directive

The European Union's WEEE directive requires that products sold into EU countries must have the crossed-out trash bin label on the product (or the package in some cases). As defined by the WEEE directive, this cross-out trash bin label means that customers and end-users in EU countries should not dispose of electronic and electrical equipment or accessories in household waste. Customers or end-users in EU countries should contact their local equipment supplier representative or service center for information about the waste collection system in their country.



### Directive de l'Union Européenne (UE) sur l'Élimination des Équipements Électriques et Électroniques (DEEE)

La directive DEEE de l'Union Européenne impose que les produits vendus dans les pays de l'UE portent la marque (éventuellement sur l'emballage) d'une poubelle sur roues barrée d'une croix.

Comme la directive DEEE l'explicite, cette marque composée d'une poubelle sur roues barrée d'une croix signifie que les clients et les utilisateurs des pays de l'UE ne devraient pas inclure leurs équipements électriques et électroniques ou accessoires dans leurs déchets ménagers. Les clients ou utilisateurs des pays de l'UE devraient contacter le représentant local de leur fournisseur d'équipement ou un centre de service pour s'informer sur le système de collection de déchets dans leur pays.



### De richtlijn inzake afgedankte elektrische en elektronische apparatuur (AEEA) van de Europese Unie (EU)

De richtlijn AEEA van de Europese Unie vereist dat producten die in de landen van de EU worden verkocht (of in sommige gevallen de verpakking daarvan), moeten zijn voorzien van het etiket met een doorgekruiste vuilnisbak. Zoals bepaald door de richtlijn AEEA, betekent dit etiket met de doorgekruiste vuilnisbak dat klanten en eindgebruikers in de landen van de EU elektrische en elektronische apparatuur of toebehoren niet met het huisvuil mogen wegwerpen. Klanten en eindgebruikers binnen de EU moeten contact opnemen met hun plaatselijke leverancier of onderhoudscentrum voor informatie over het afvalinzamelsysteem in hun land.



### Richtlinie über Elektro- und Elektronik-Altgeräte (WEEE) der Europäischen Union (EU)

Produkte, die in EU Ländern auf den Markt gebracht werden, müssen mit einer durchgestrichenen Abfalltonne gekennzeichnet sein (oder in einzelnen Fällen die Verpackung). Die WEEE Direktive definiert, dass Kunden und Endnutzer in Ländern der Europäischen Union (EU) elektronische und elektrische Geräte sowie elektronisches oder elektrisches Zubehör nicht in den Hausmüll entsorgen dürfen. Innerhalb der EU setzen Sie sich bitte mit dem örtlichen Vertreter oder Kundendienst Ihres Geräteherstellers in Verbindung, der Ihnen Auskunft zur Altgeräteentsorgung/-abholung geben kann.

IT

**La direttiva de la Unione Europea (EU) sui rifiuti di apparecchiature elettriche ed elettroniche (RAEE)**

La direttiva RAEE della Unione Europea richiede che i prodotti venduti nei paesi della UE debbano essere marcati con il simbolo di un contenitore spazzatura mobile barrato sul prodotto (o in casi eccezionali sull'imballaggio). Il simbolo di un contenitore spazzatura mobile barrato, conforme alla direttiva RAEE, significa chi i clienti e i detentori finali nei paesi della UE, non dovrebbero smaltire gli apparecchi o gli accessori elettronici ed elettrici con i normali rifiuti domestici. I clienti o i detentori finali nei paesi della UE dovrebbero rivolgersi al fornitore, rappresentante o centro di riparazione locale per ottenere informazioni sui sistemi predisposti nel proprio paese per la raccolta di apparecchi usati.

PT

**Directiva da União Europeia (UE) relativa aos Resíduos de Equipamentos Eléctricos e Electrónicos (REEE)**

A Directiva REEE da União Europeia exige que os produtos vendidos em países da UE tenham a etiqueta com o símbolo do contêntor do lixo barrado com uma cruz no próprio produto (ou, em determinados casos, na embalagem). Tal como definido pela Directiva REEE, este contêntor do lixo barrado com uma cruz significa que os clientes e utilizadores finais nos países da UE não devem eliminar equipamentos eléctricos e electrónicos ou acessórios junto com o lixo doméstico. Os clientes ou utilizadores finais nos países da UE devem contactar o representante local do fornecedor do equipamento ou um centro de assistência para obter informações relativas ao sistema de recolha de lixo nos países onde vivem.

RU

**Директива Европейского Союза (ЕС) об утилизации электрического и электронного оборудования («УЭЭО»).**

Директива «УЭЭО» Европейского Союза требует, чтобы на изделиях, продаваемых в странах ЕС (а в отдельных случаях на их упаковке), была нанесена маркировка в виде перечёркнутого мусорного контейнера. Как установлено в директиве «УЭЭО», такая маркировка в виде перечёркнутого мусорного контейнера означает, что покупатели и конечные пользователи не должны выбрасывать электронное и электрическое оборудование или приборы в бытовой мусор. Покупателям и конечным пользователям в странах ЕС следует обращаться к местным представителям поставщиков оборудования или в сервисные центры для получения информации о системе сбора отходов в их стране.

ES

**La directiva de la Unión Europea (EU) sobre Residuos de Aparatos Eléctricos y Electrónicos (RAEE)**

La directiva RAEE de la Unión Europea requiere que los productos vendidos en los países de la UE sean rotulados mediante el símbolo de un contenedor de basura tachado sobre el producto (en algunos casos sobre el envase). Conforme con la directiva RAEE, el símbolo del contenedor de basura tachado significa que los clientes y usuarios finales en los países de la UE no deberían de disponer los aparatos eléctricos o electrónicos ni ninguno de sus componentes junto a la basura doméstica. Clientes o usuarios finales en los países de la UE deben entrar en contacto con el centro de servicio o proveedores del equipo para obtener información acerca del sistema de recolección en su país.

Printed in Australia