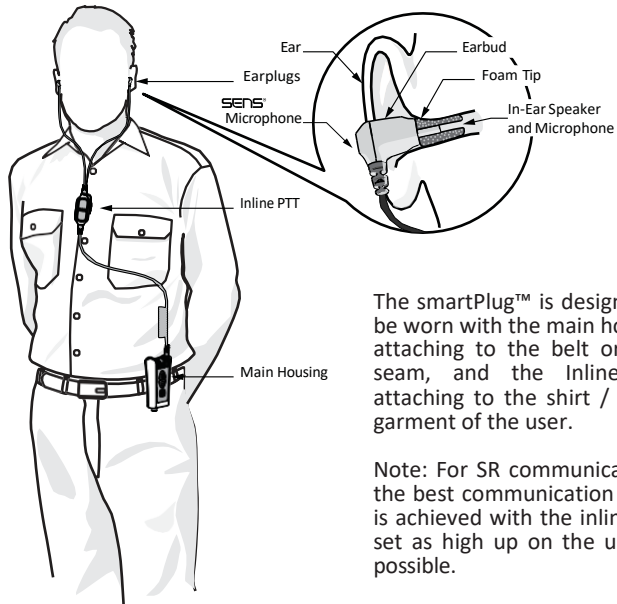


# WEARING THE HEADSET

The smartPlug™ is a state-of-the-art hearing protection communication system that allows you to retain situational awareness while being in full contact with all your communication devices.

Situational awareness is provided by SENS® processing technology and environmental microphones within the earpieces.

Contact through other communication devices is enabled by: Two-way radio interface cables (sold separately), Bluetooth® to two-way radios and cell phones (if installed), and direct headset-to-headset communications through Short-Range FM transceiver (if installed). Settings can be configured further via the programming tablet.



The smartPlug™ is designed to be worn with the main housing attaching to the belt or pant strap, and the Inline PTT attaching to the shirt / upper garment of the user.

Note: For SR communications, the best communication range is achieved with the inline PTT set as high up on the user as possible.

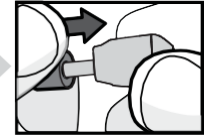
# FITTING THE EARPLUGS



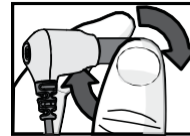
1. Place disposable foam tip between thumb and forefinger.



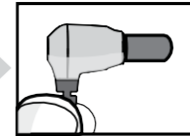
2. Roll foam tip to a compressed, crease free cylinder



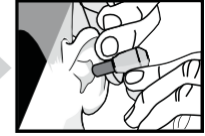
3. Push the foam tip all the way onto the ear bud spout.



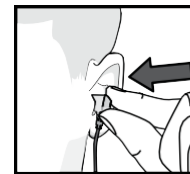
4. Roll the foam tip again between the thumb and forefinger.



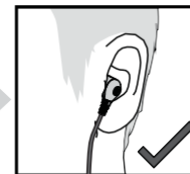
5. Ensure the foam tip remains a compressed, crease free cylinder on the ear bud.



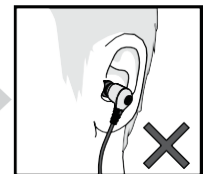
6. Using your opposite hand, pull your ear upward and outward. Insert the ear bud deeply into the ear.



7. Hold the ear bud in place for 30 seconds while the foam tip expands.



8. Check to ensure the ear buds are correctly inserted.



9. A poor fit will be visible by the ear buds being far away from the ear. No part of the foam tip should be visible. Repeat the process until a good fit is achieved.

# CHARGING

The headset should be regularly charged. To charge your headset connect the charger to the headset and connect to the mains power.

While charging the Right Indicator LED will be **Red**.

When charging is complete the LED will turn **Green**.

If **battery is low**, the LED will **flash Red** (when the unit is turned on)

**Note:** Be sure to charge your headset fully before first use.

**Note:** Your headset will automatically power up when the charger is connected to the headset.

**Charge Time:** 5 hours  
**Battery Life:** 24 hours

# POWER ON HEADSET

Your headset must be powered up to use SENS® situational awareness and the communication connectivity features.

## Power On / Off

To power up your headset press and release the power button.

To power off your headset press and hold the power button until the unit powers off.

# ENVIRONMENTAL MODES

Your smartPlug™ headset features SENS® situational awareness technology (Speech Enhancement Noise Suppression).

SENS® allows you to be in audible contact with your surroundings while wearing your headset.

To toggle SENS® situational awareness on/off, momentarily press and release the power button.

# QUICK START GUIDE

